

I.H. 667.48

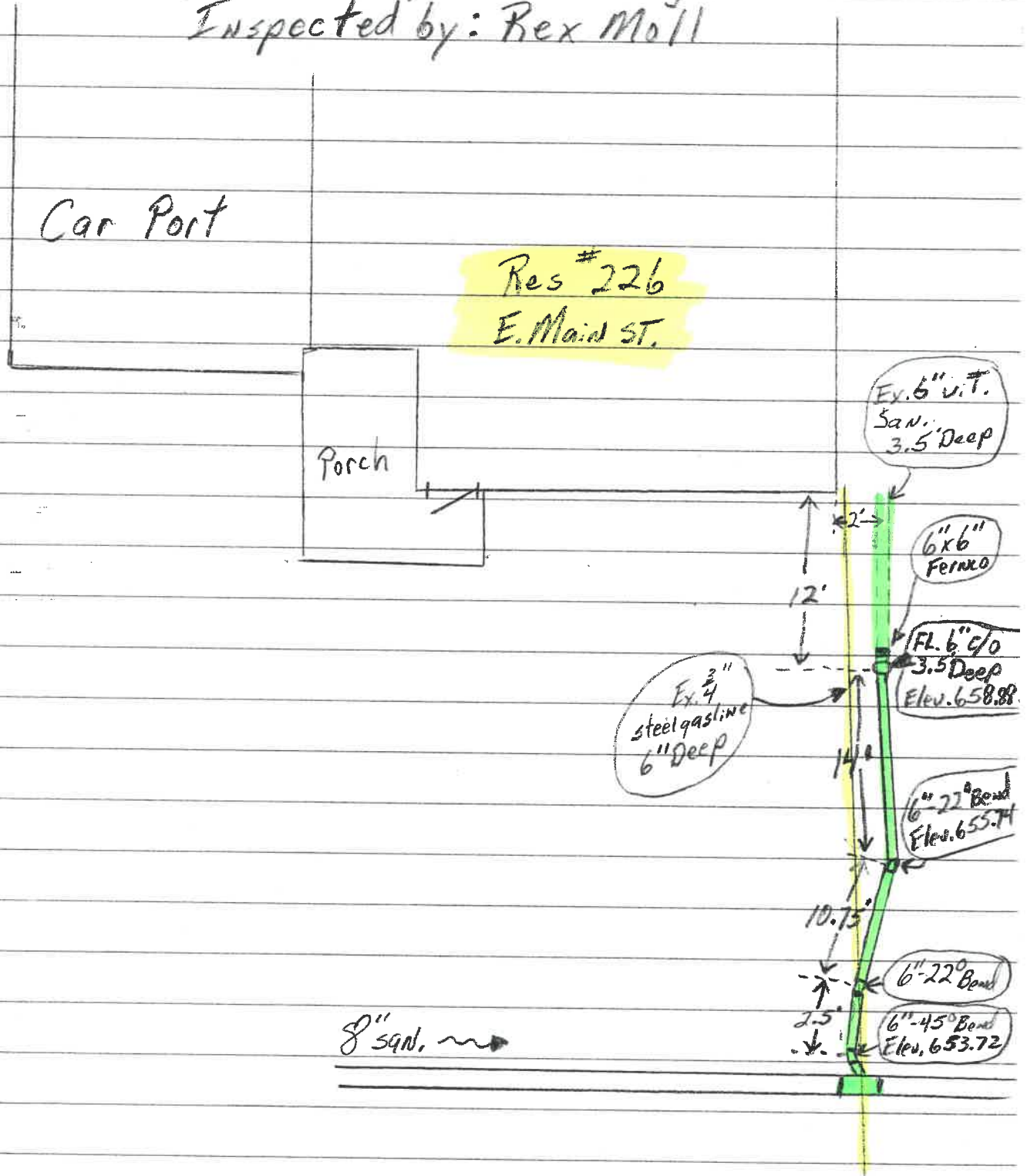
6" c/o 8.60
8" x 8" x 6" WYE 12.76

E. Main ST.

Date Installed: 3-3-04

Installed by: Vernon Nagel Constr.

Inspected by: Rex Moll



Car Port

Porch

Res #226
E. Main ST.

Ex. 6" v.i.t.
San.
3.5' Deep

6x6"
Fernox

FL. 6" c/o
3.5' Deep
Elev. 658.88

Ex. 2"
steel gasline
6" Deep

6" 22° Bend
Elev. 655.74

6" 22° Bend

6" 45° Bend
Elev. 653.72

8" sqd. ~~~~~>